



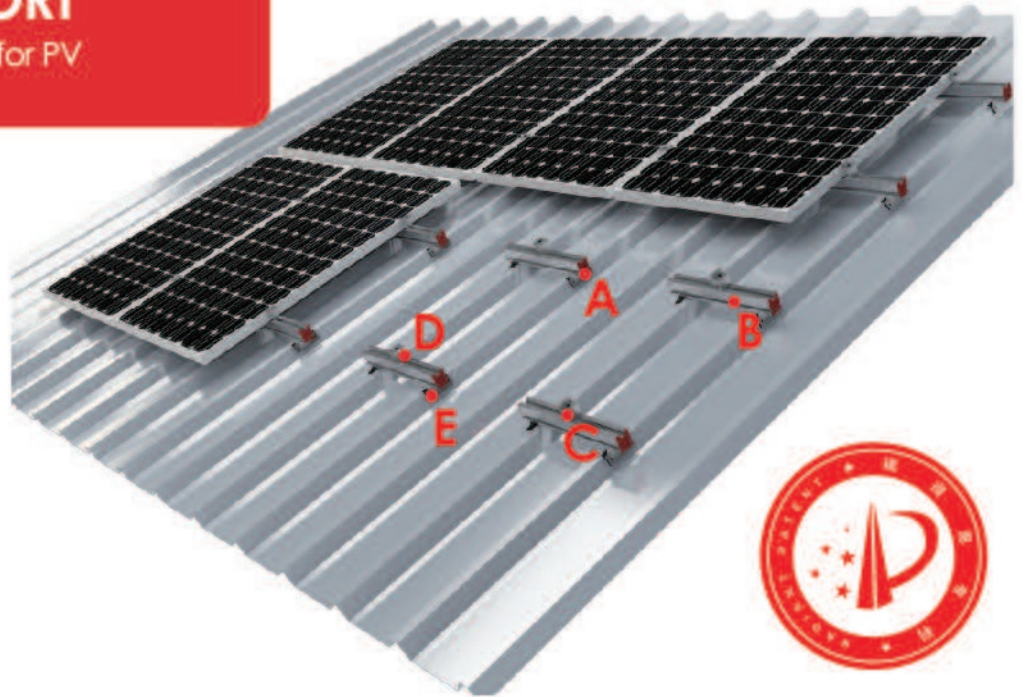
Reliable Energy Solutions

TRIM DEK SUPPORT

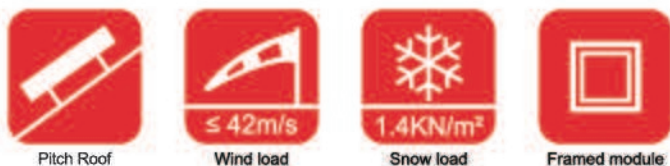
Rooftop mounting system for PV Modules

Our Trim Dek Support is a brand new design for attaching our roof-mount systems to Trim dek roof profiles. It's waterproof, fast to install and competitively priced and can be used for many applications.

- Flexible rooftop mount system
- Excellent waterproof
- Significant savings
- Compatible with most modules
- Static reliability
- Maximum service life



Trim Dek support+EPDM Rubber Material:SUS304 & EPDM	A Base Rail 40X40 Material:AL6005-T5	B End Clamp Kit Material:AL6005-T5 & SUS304	C Middle Clamp Kit Material:AL6005-T5 & SUS304	D Wood screw Material:SUS304(Surface NSDCC)	E



Technical Datasheet :

Application	Pitch roof
Wind load	up to 42m/s
Snow load	1.4KN/m ²
PV modules	Framed
Module layout	according to requirements
Module orientation	landscape, portrait
Module inclination	0° - 45°
Building height	Up to 20m
Standards	JIS 8955:2011/DIN1055/ASCE_7-05/AS/NZS1170
Color	Natural
Warranty	10 years